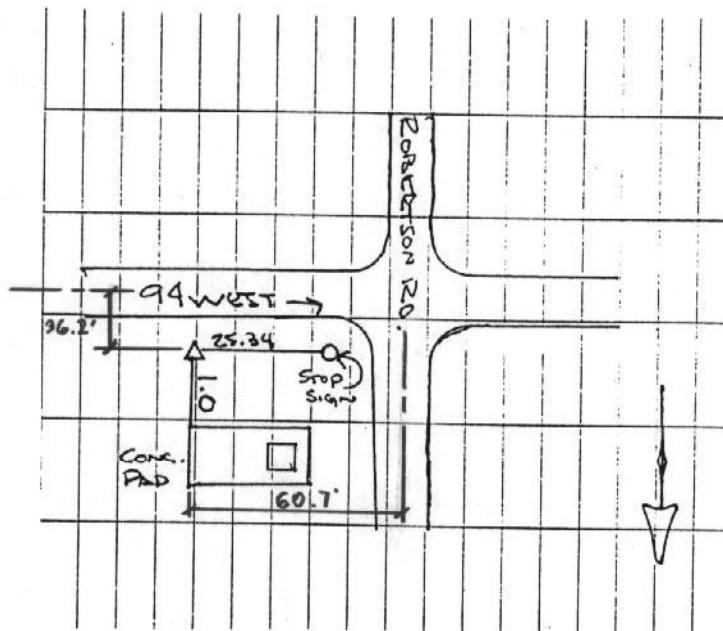


CITY OF MURRAY CONTROL MONUMENT CARD

DESIGNATION: B6 GPS
TYPE: CONCRETE MONUMENT W/ CITY DISK
DATE SET: JUNE 1997 QUAD: MURRAY, KY.
HORIZONTAL DATUM: NAD-83 VERTICAL DATUM: NAVD-88
STATE: KENTUCKY COUNTY: CALLOWAY ZONE: KY. S 1602

NORTHING: 1749968.87 FT
EASTING: 876806.61 FT
ELEVATION: 564.16 FT (GPS)
LATITUDE: N 36°36'19.25233" LONGITUDE: W 088°21'06.08905"
SCALE: CONVERGENCE:
PLANE AZI. TO AZI. MARK:

To Reach: From the intersection of Robertson Rd. and State Road 94, go east on State Road 94 about 30 ft. to the station on the left.



NOT TO SCALE

GRW Aerial Surveys, Inc.
801 Corporate Dr. Lexington Ky. 40503
(606)223-3999